

Team Sddec24-14: Website Migration Project



Chiran Subedi, Danh Hoang, Bryant David, Piper Ideker

<https://sddec24-14.sd.ece.iastate.edu/>

Advisor: Professor Judith Islam

Client: John Stuijbergen, Buildertrend

Client: Buildertrend

- Constructs and host sites
 - Home builders
 - Remodelers
 - Specialty Contractors
- Ended Partnership with Duda
 - Clients satisfied with Duda sites
- Switched to WordPress



Problem Statement

- Migrate existing Duda sites to WordPress
- Maintain or improve on quality
- Simplistic design structure
 - Inexperienced users
 - Easier to update
 - Maintainable



Project Overview

- Migrate sites
- Reference original site
- Similar site structure
- Tools: WordPress, Elementor & Flywheel
- Satisfy needs of the personas



Personas

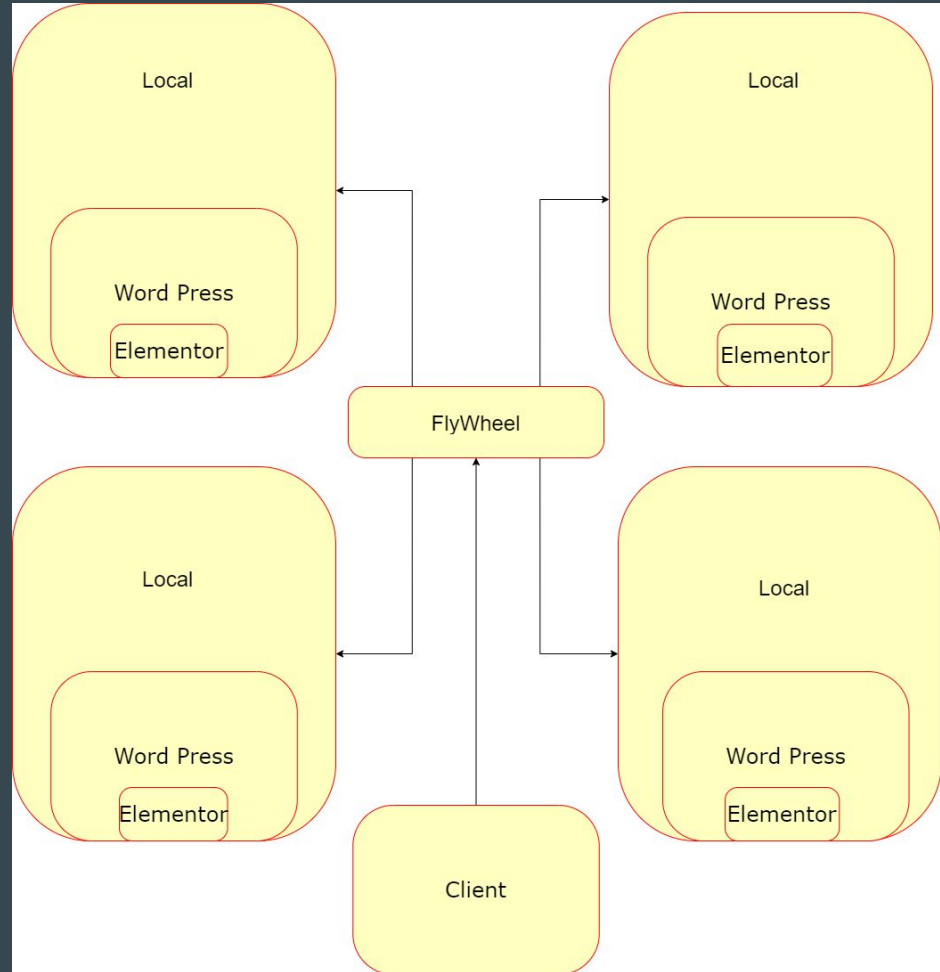
- Persona 1: Buildertrend
- Goal: Give client a quality website

- Persona 2: Site owner
- Goal: Connect services to users

- Persona 3: Users
- Goal: Get information



Conceptual Sketch



Functional Requirements

- Content Migration
 - Transfer all contents
- Design Replication
 - Replicate Layout of Duda
- Feature Parity
 - Recreate all Features
- Responsive Design



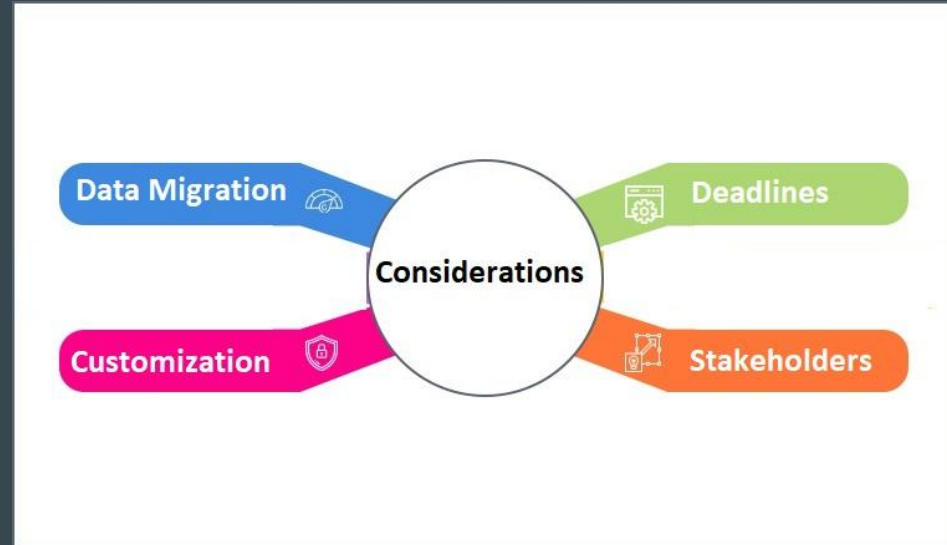
Non-functional Requirements

- Maintainability
- Scalability
- Usability
- Availability
- Consistency



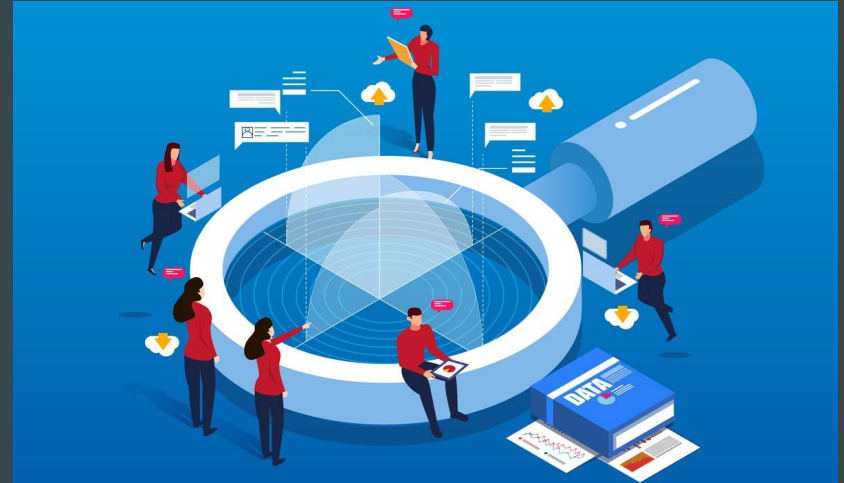
Technical/Other Constraints/Considerations

- Data Migration Challenges
 - Lack of Auto Migrator
- Customization Complexity
 - Complex Features to Replicate
- Time and Deadlines
 - Start to Deployment
- Stakeholders Expectations
 - Communicate with Client



Market Survey/Research

- Advantages:
 - Structured approach
 - Offer security & analytics
 - Have specific tools/services
- Disadvantages
 - Cost
 - Needs access to resources
 - Different restrictions for each service
 - Varying complexity



Potential Risks - Security

- Harmful plugins
 - Some have malware
 - Older versions are more vulnerable
- Solution:
 - Frequently update plugins
 - Don't download old plugins
 - Use popular plugins



Potential Risks - Complexity

- Complex design and elements
 - Hinder site performance
 - Inexperienced users
 - Difficult to update/change
- Solution
 - Aim for simplicity
 - Use original site as guide
 - Keep the users in mind



Project Milestones & Schedule

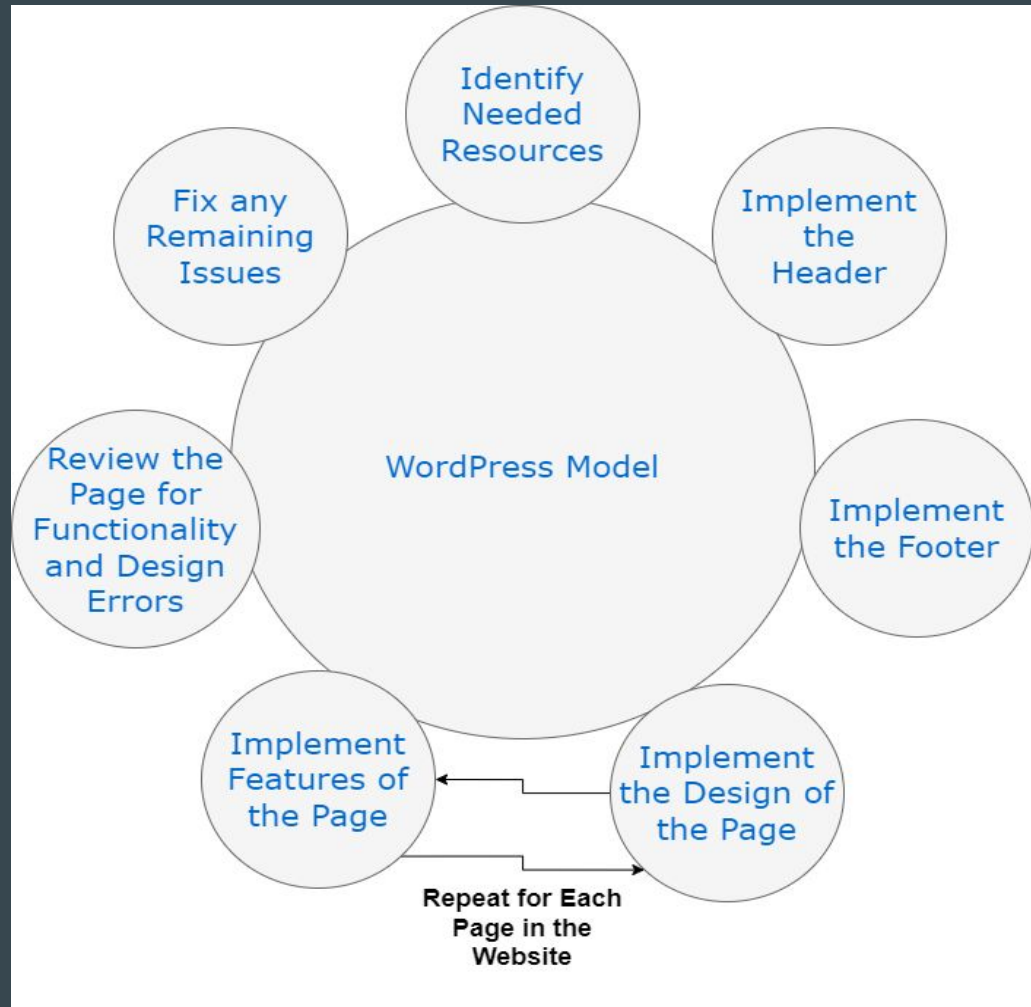
- Project Initiation (Week 1 -2)
- Requirements Gathering (Week 3 -4)
- Planning and Strategy (Week 5 -6)
- Design and Theme Development (Week 7 -10)
- Development and Integration (Week 11 -14)
- Testing and Quality (Week 15 -16)
- Deployment and Go-Live (Week 19 -20)
- Post-Launch Monitoring/Optimization

Functional Decomposition

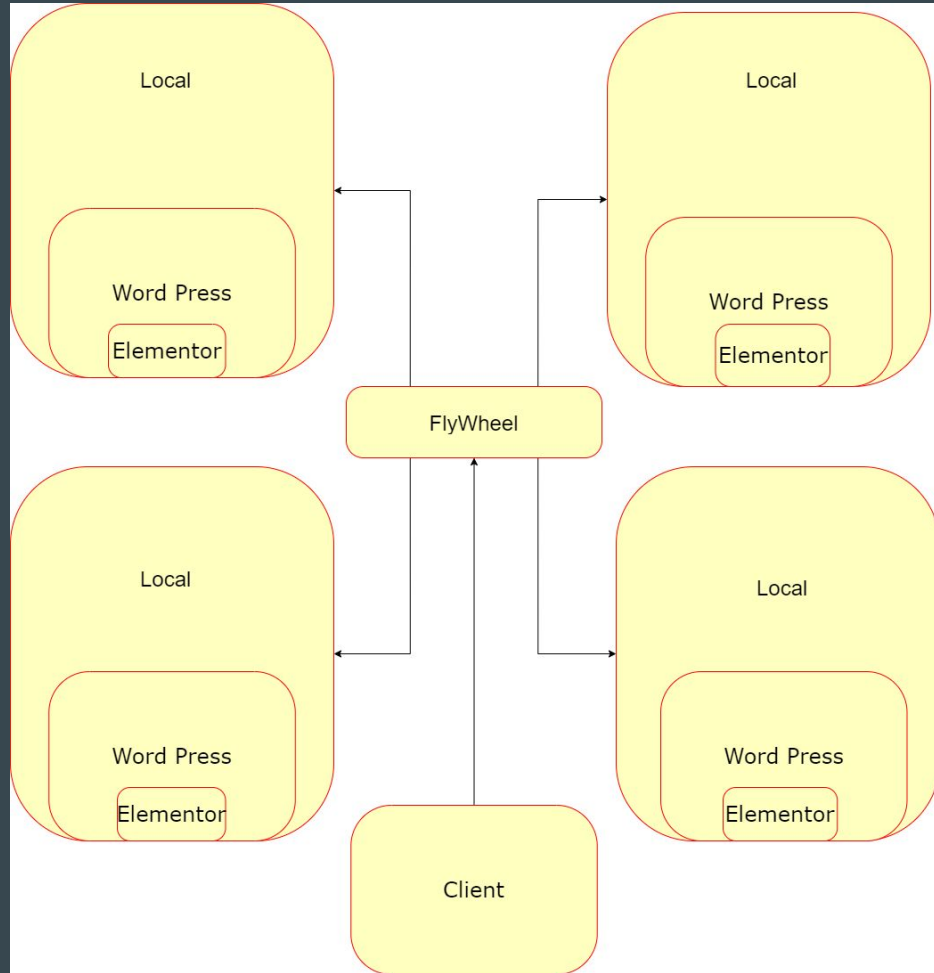
- Content Migration
- Design Replication
- Feature Implementation
- Responsive Design
- Performance Optimization



Detailed Design



Detailed Design



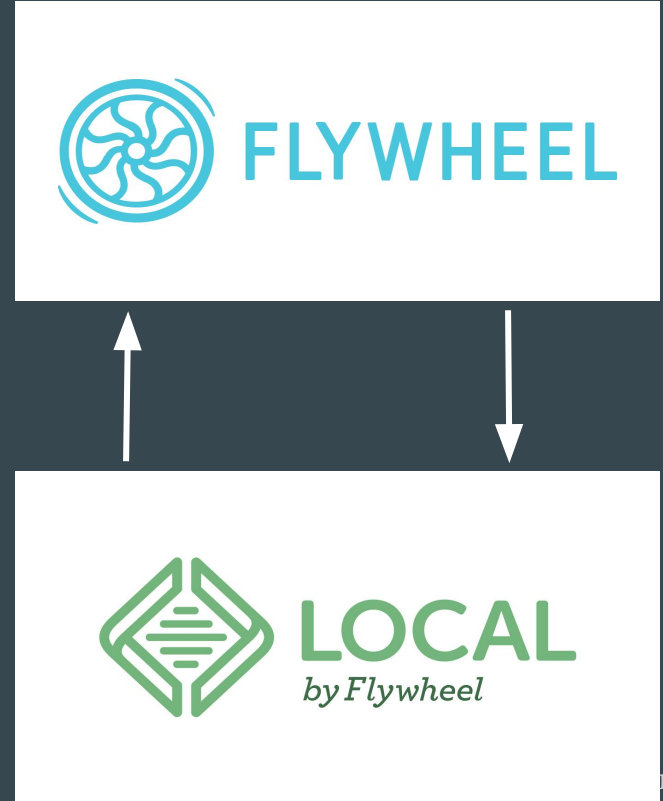
SW Technology Platforms Used - Elementor

- Drag & Drop Plugin
- Easy Modifications
- Responsive Design
- Learning curve



SW Technology Platforms Used - Flywheel & Local

- WordPress Hosting Provider
- Security
- Scalability
- Easy Site Management
- Merging issues



Test Principles

- Manual
- Unit Testing
- Functional testing
- Integration Testing
- Acceptance Testing
- Regression Testing



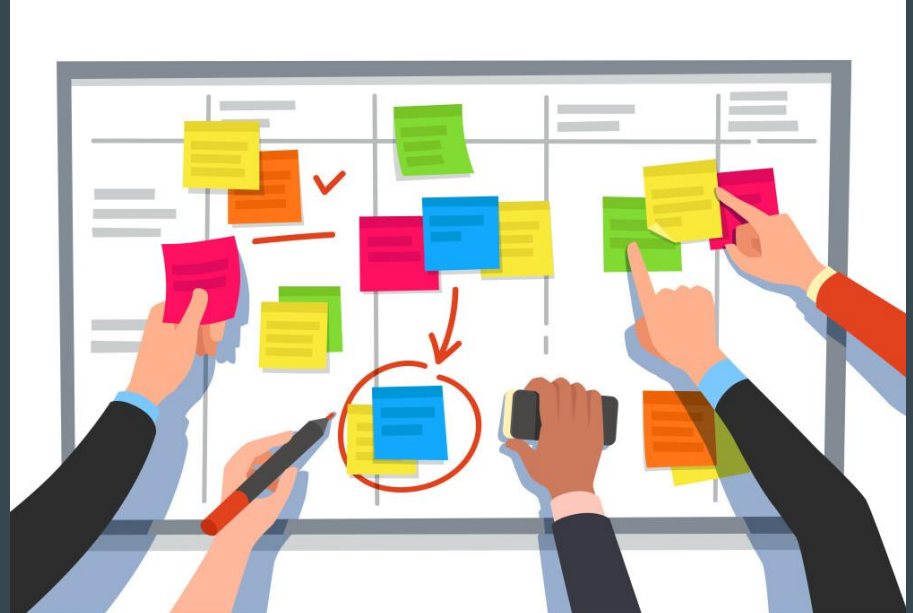
Current Project Status

- Extensive familiarity with the process of utilizing the given tools to replicate a website.
- Completed or working on the following websites:
 - Aune Brothers Construction
 - JCLC Homes
 - Britestreet
 - Cherry Building Group
 - Bigger Staff Co
- Script to convert Duda Collections into SQL Statements for defining a table and inserting data.
- Wordpress theme templates for different aspects of the website i.e Header, Footer, Post, etc.



Task Responsibility/Contributions

- Piper Ideker
 - Fully finished Aune Brothers Construction website
 - Started work on Bigger Staff Co website
- Danh Hoang
 - Worked on Brittestreet website
 - Created general templates
- Chiran Subedi
 - Manually migrating JCLCHomes
 - Creating templates for themes
 - Script for converting Duda Collections to mySQL
- Bryant David
 - Cherry Building Group
 - Applied Themes/Plugins



Plan for Next Semester

- Unfortunately we recently discovered that this project ends in June of this year and it won't continue next semester.
- We talked to Professor Shannon and Fila about this issue, and they said that we would have to join a different group and join a continuing project.

QUESTIONS?